



# FA01: Southeast Minnesota Protection & Restoration Phase 9

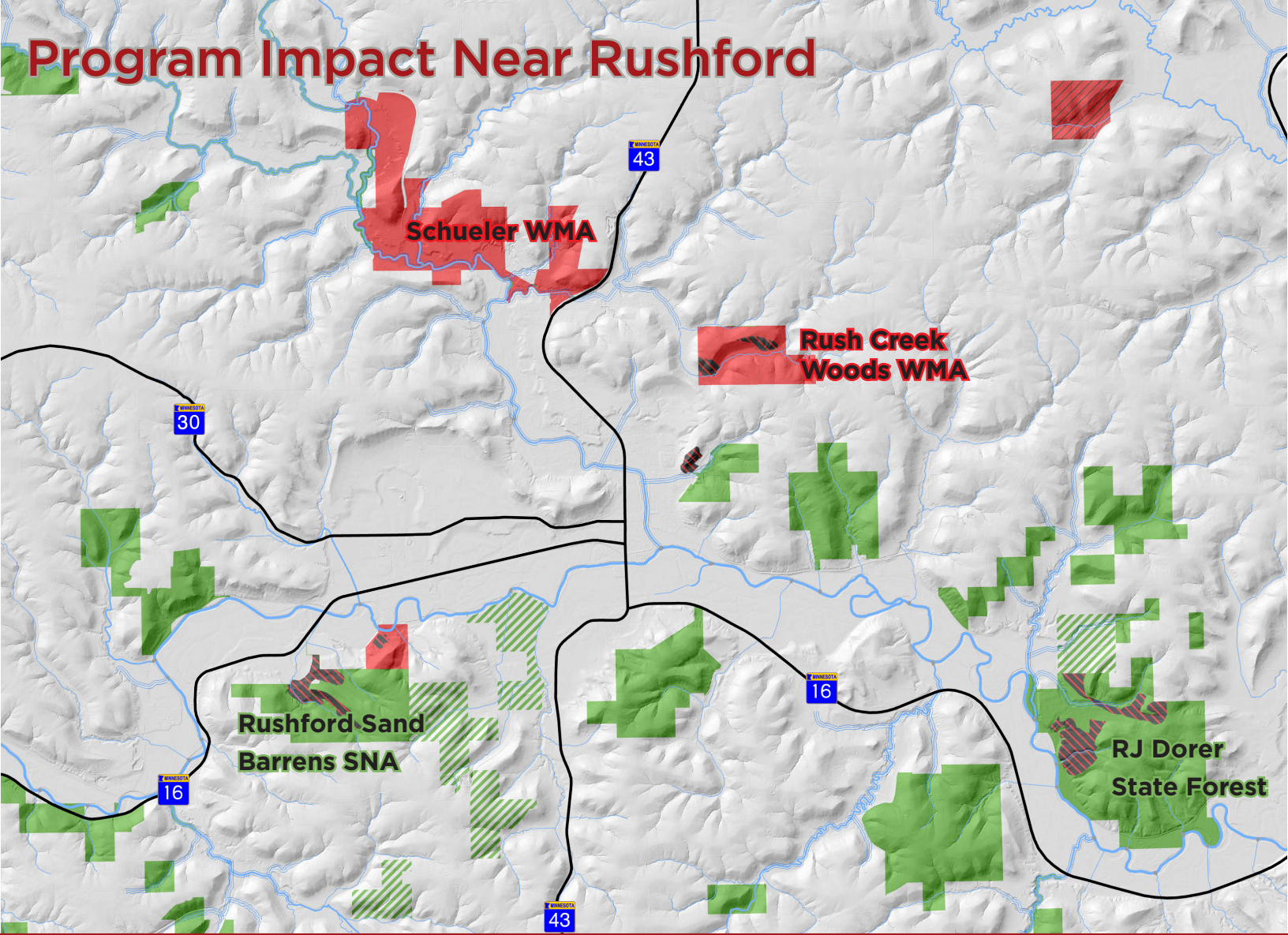


The new Schueler WMA (top and middle photos) includes a long stretch of Rush Creek and several high quality bluff prairies.



Goats are being used on bluff prairies to control the re-growth of invasive brush and ensure the sustained success of enhancement projects funded through the Outdoor Heritage Fund. Using goats in this way is a relatively new and innovative technique in this landscape, and it's making invasive brush control on goat prairies much more cost-effective.

# Program Impact Near Rushford



# Program Impact in the South Fork of the Root River Watershed

